



MTG1000 Trunk Gateway

Overview

MTG1000 series is a carrier-grade NGN trunk gateway. There are four different models with 1*E1/T1(optional), 2*E1/T1(optional), 4*E1/T1 and 8*E1/T1. It supports SIP-T/SIP/H.323 protocol to connect with SIP-T/SIP/H.323 soft switch, and supports PRI/SS7 signaling protocol to connect with PSTN. Up to 240 channels processing capacity, it guarantees the maximum performance of 8*E1/T1 trunk gateway (G.711/G.723/G.729 codec calls and T.38/Pass-through Fax).

Product Pictures



Key Benefits

- energy efficiency concurrent processing, up to 240
- Service oriented architecture, rich services , support voice, IP fax and Modem/POS service
- Flexible dial-up rules and operation, in order to adapt to the different work scene.
- Voice codec: G.711A/U,G.723.1,G.729A/B, iLBC
- Good compatibility, support Asterisk, Elastix, Freeswitch and Small and medium IPPBX platform

Decade Focused

Creates the High-quality Products

Voice & Fax

- G.711A/U law, G.723.1, G.729A/B, iLBC
- Silence Suppression & Detection
- Comfort Noise Generation (CNG)
- Voice Activity Detection (VAD)
- Echo Cancellation (G.168)
- Adaptive (Dynamic) Jitter Buffer
- Call Progress Tone Generation
- Programmable Gain Control
- T.38/Pass-through fax, up to 14.4kbps
- Modem
- RFC3407
- FAX/X-FAX
- QoS control: ToS, DS

Call Feature

- DTMF: RFC2833, SIP INFO, INBAND
- Back tone/busy tone control
- Digit Map
- Dial rule configuration, max 2000 rules
- Overlap receiving
- Dial time control
- Time slot group management
- E1/T1 port group management

Protocol & IP Feature

- SIP-RFC 3261, 3262, 3263, 3264, 3265, 3515, 2976, 3311
- SDP -RFC 2327
- RTP/RTCP-RFC2198, 1889
- SIP-T, RFC3372, RFC3204, RFC3398
- H.323, ITU-T H.323 V4
- SIP domain register
- IP group management
- Trunk priority management
- H.323
- Peer/Access work mode
- IP address/domain authentication
- SIP username/password register to remote

Signal

- PRI/PRA
ISDN E1/T1, Japan T1.
ITU-T I.431, Q.921, Q.931, ETSI Q.sig
- SS7/No.7
ITU, ANSI, ETSI, ITU-China,
MTP layer 1/2/3, ISUP/TUP
- SS7 MTP link management
- SS7 circuit maintenance



Customer First Services More Intimately

Maintain & Upgrade

- Web based configuration
- HTTP/Telnet configuration
- Data backup/restore
- Support English and China language
- Firmware upgrade by TFTP
- Web & telnet login password modify
- SNMP management
- Syslog: Debug, Info, Error, Warning , Notice
- CDR
- NTP Configuration

Physical Properties

- Power backup
- Power: input:100-240V,50-60Hz, 1.1A Max
output:220 VAC,0.5A
- Power consumption: 25W
- Temperature(operation): 0 °C ~ 45 °C
(storage): -20 °C ~80 °C
- Operation Humidity: 10%-90% no condensation
- Dimension(w/D/H): 436*300*44.5mm(1U)
- Weight: 2.0kg
- Color & material: black, iron box

Routing & Num manipulation

- Many routing way
PSTN-PSTN, PSTN-IP, IP-IP, IP-PSTN
- Intelligent routing
- Routing time control
- 256 routing
- Caller/callee manipulation
- 128 number manipulation

Physical Interface

- ISDN Interface: 8E1/T1, G.703, 120Ω RJ-48
- Ethernet Interface:
FE0(WAN):service eth interface),
FE1(LAN):management eth interface)
*10/100M Base-Tx RJ45
- Management Interface:
1 Console, 9600bps

Network Protocol

- IP, TCP, UDP, TFTP, FTP, RTP, RTCP,
ARP/RARP, ICMP Ping, NTP, SNTP, HTTP, DNS

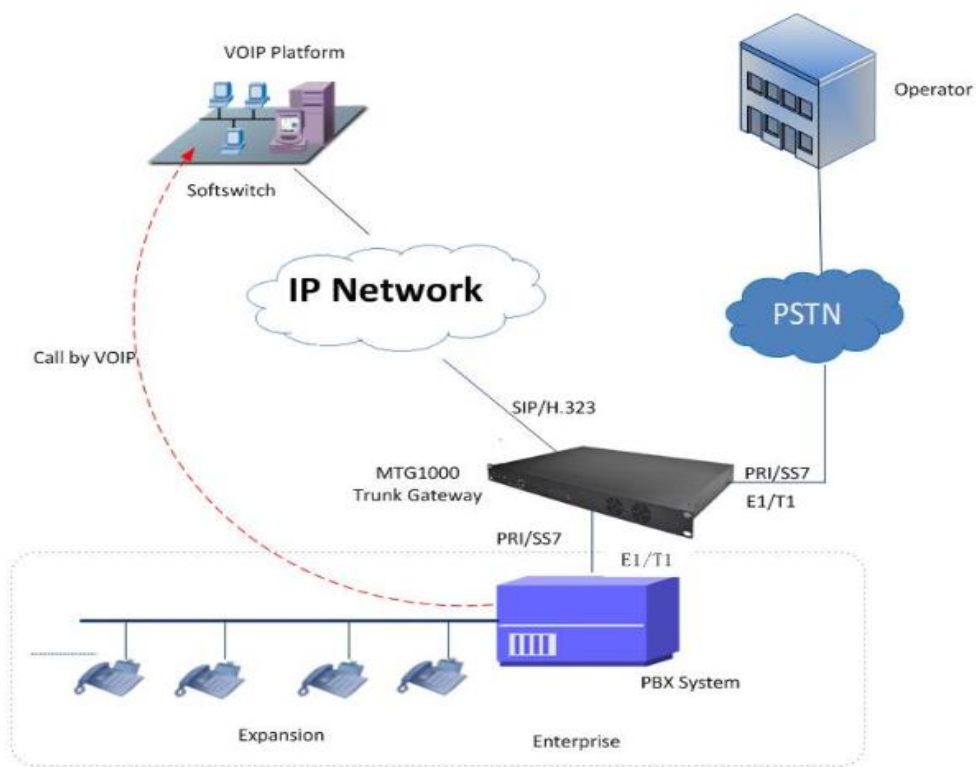
Certifications

- CE, FCC



Trust Growth Cooperation Sharing

System Application



Floor 9, Guoxing Building, Changxing Road, Nanshan District, Shenzhen,
China 518052

Tel: +86 755 2645 6664 Fax: +86 755 2645 6659

Email: sales@dinstar.com support@dinstar.com

Website: www.dinstar.com

The Gateway to VoIP World